



Custom panel artwork guidelines

How it works?

The standard printer can be customised in so many ways!

Custom wrap pink area **A** (x2 side door panels) 2 different designs that can be printed in full colour

Custom wrap pink area **B** (x1 left D panel) 1 design that can be printed in full colour

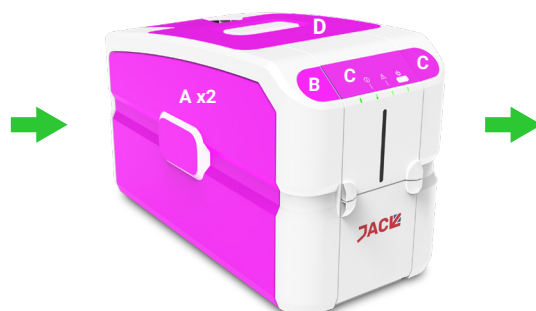
Custom plastic pink area **C** (top labels) choose one colour: blue (standard), red or black (custom)

Custom plastic pink area **D** (top lid) choose one colour: blue (standard), red, black or white (custom)

Standard bundle



Customise areas in pink



Final custom design



Guidelines for panels A and B

What format do i need to submit my artwork in?

We normally ask to receive vector artwork, saved as an **.ai file** that has been created in Adobe Illustrator and saved as outlines. We know this isn't always possible and are also happy to accept .JPG, .PDF, .PSD, .TIFF, .AI and .PNG files as well. All images need to be supplied at 300dpi to the stated maximum print dimensions in the guidelines. Any images provided at a lower resolution to the specified requirement will result in reduced quality of print reproduction. Your PDF proof will be used as a print quality document before printing.

Colours in my artwork?

Have as many colours as you want. The final artwork is printed in CMYK print format. Any spot or Pantone colours will be matched as close as possible using a CMYK process.

Can you help me with my artwork?

We're always happy to help our Javelin customers and our in-house art team will ensure it's in the correct format and at a suitable quality for printing. This service is often free of charge but more complicated designs might incur a small charge.

Will I get to see how my artwork looks on the printer?

You will. We're always happy to provide our customers with a free 3D visual like above. Once visual is approved you will receive an artwork PFD, let us know any final amends you may want. We will then send you a final approval PDF before we start printing.

IMPORTANT:





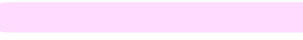
Please be sure to double-check your spelling, grammar, layout and design before approving artwork.

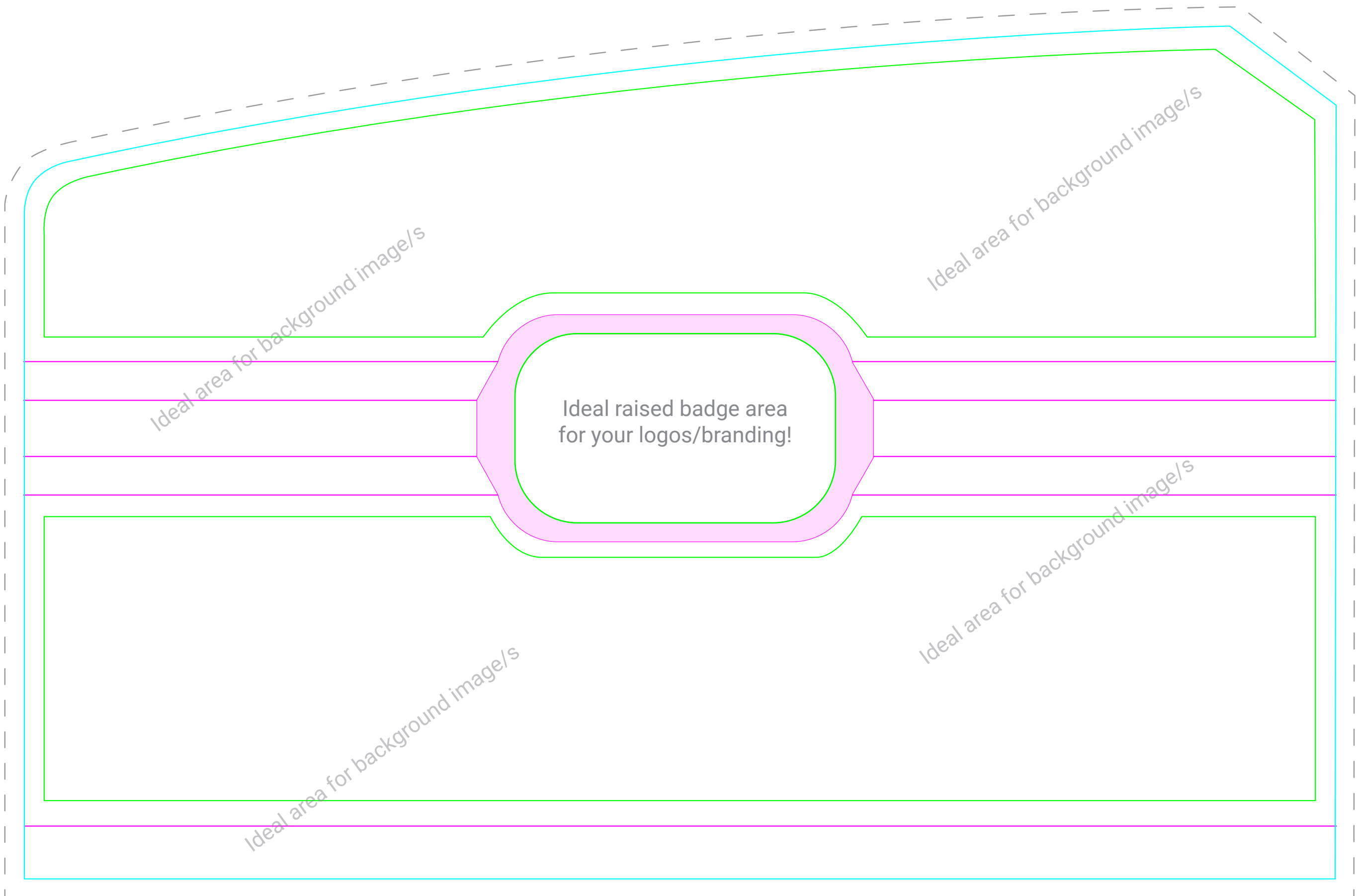
If you're unsure, don't worry we are always happy to advise and we're here to help you every step of the way!

Contact us: info@javelin-id.com or call 0800 505 3828

Javelin left side door artwork guide

Scale 1:1

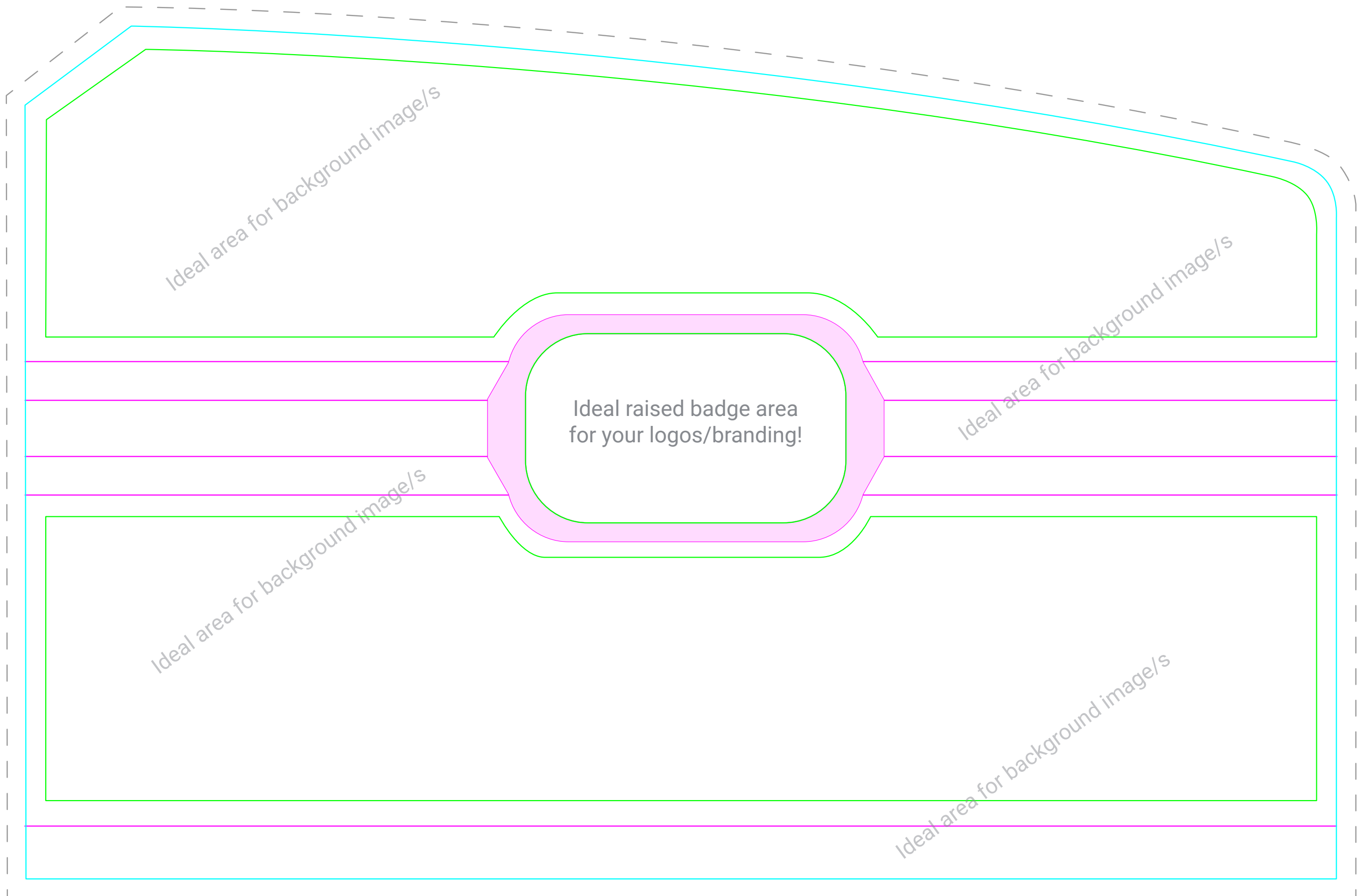
-  Bleed area 5mm (required)
-  Maximum print area/door panel size (Max. W x H limits = 349 x 227mm)
-  Safe type and logo areas
-  Panel contours (NB. any print over this area will distort slightly)
-  Non print area. Will be the printers white plastic bevel edge



Javelin Right side door artwork guide

Scale 1:1

- Bleed area 5mm (required)
- Maximum print area/door panel size (Max. W x H limits = 349 x 227mm)
- Safe type and logo areas
- Panel contours (NB. any print over this area will distort slightly)
- █ Non print area. Will be the printers white plastic bevel edge



Javelin custom Left D panel artwork guide

Scale 1:1



Bleed area 5mm (required)



Maximum print area/door panel size (Max. W x H limits = 35.2 x 40 mm)



Safe type and logo areas

